

A large, rectangular mirror with a white, illuminated frame is mounted on a wall. The mirror reflects a modern bathroom interior, including a shower area with glass doors and a towel rack. Below the mirror is a dark, textured countertop with two chrome faucets. To the left of the faucets, a white towel hangs on a chrome rack. To the right, there are various bathroom accessories, including a soap dish and a container. In the foreground, a wooden shelf holds several folded white towels.

INNOVATIVE REFLECTIONS

BY SCOTT LAMP CO.

COMMITMENT TO EXCELLENCE

Our years of lighting design and manufacturing led us to the backlit mirror industry as a natural extension. We approach every mirror design from a lighting point of view. Today there are many different companies supplying backlit mirrors to the hospitality industry, many of which do not understand the subtle nuances to optimize the form, fit and function.

Our commitment to leadership in product design means that we are continually researching and developing improvements that transform mirrors into innovative products that enhance and enrich bathrooms and public spaces. By incorporating the latest lighting technology into mirrors we provide cutting edge solutions to aesthetic considerations and project requirements.





ABOUT OUR COMPANY

Our backlit mirrors are manufactured in our 94,000 square-foot facility in Fairfield, California. We have complete design and engineering services and provide conceptual sketches, presentation drawings, renderings and complete shop drawings upon request. We use SOLIDWORKS, a 3D modeling software, to increase our in-house design and manufacturing efficiency. We can custom tailor our mirrors to specific installations, without losing any of the essential characteristics of a superior product.

Simplistic and timeless, we have chosen to remain focused on mirror designs that have proven to be the most popular choices. We do not believe that adding unnecessary technology or features neither improves the operating efficiency, or the design aesthetic.

While illuminated mirrors are shown throughout this catalog, Innovative Reflections can also produce non-illuminated mirrors in any shape and size to fit your needs.

Although this catalog shows many industry standard design concepts, we welcome the chance to work with you on your custom visions. Let us know and we'll create an innovative, custom model that fits your specific requirements. Remember, if you can imagine it, we can built it.



ATHENA

SERIES MODEL #9220

This style's illuminated border is inset from the edge of the glass allowing the majority of light to shine through the frosted border. With its clean lines, polished edges and transitional feel, it will enhance a variety of interior motifs.

Item #	H	W	D	LED Wattage
9220-40x30	40"	30"	2.125"	80 Watts
9220-40x40	40"	40"	2.125"	95 Watts
9220-40x54	40"	54"	2.125"	110 Watts

** Custom Sizes Available, Consult Factory*

OPTIONS

- Integral Nightlight (Requires 2-Circuit Wiring)
- Touch Switch for Nightlight
- Step Dimming with touch switch
- Defogger

FEATURES

- Integral LED lighting (3,000K, 90CRI, 50,000 hour rated life)
- Powder Coated Frame Assembly
- 3/16" Glass with Polished Edge
- Fully Assembled, Installation Ready
- U.L. Listed for Damp Location
- Hardwired electrical connection
- Opalex fingerprint resistant coating on frosted panel



APOLLO SERIES MODEL #9228

The illuminated border of this series extends out to the edge of the glass. This serves the dual functions of lighting the subject and providing an ambient glow. The modern feel and effect of this style will help to accentuate its surroundings.

Item #	H	W	D	LED Wattage
9228-40x30	40"	30"	2.125"	80 Watts
9228-40x40	40"	40"	2.125"	95 Watts
9228-40x54	40"	54"	2.125"	110 Watts

** Custom Sizes Available, Consult Factory*

OPTIONS

- Integral Nightlight (Requires 2-Circuit Wiring)
- Touch Switch for Nightlight
- Step Dimming with touch switch
- Defogger

FEATURES

- Integral LED lighting (3,000K, 90CRI, 50,000 hour rated life)
- Powder Coated Frame Assembly
- 3/16" Glass with Polished Edge
- Fully Assembled, Installation Ready
- U.L. Listed for Damp Location
- Hardwired electrical connection
- Opalex fingerprint resistant coating on frosted panel



VULCAN

SERIES MODEL #9290

This square mirror features gently rounded corners, giving it a sleek and modern look. It is designed with a front-facing strip of illumination that provide bright and even light for the viewer's face, making it perfect for applying makeup, grooming, or getting ready for the day.

Item #	H	W	D	LED Wattage
9290-36x36	36"	36"	1.875"	68 Watts

** Custom Sizes Available, Consult Factory*

OPTIONS

- Integral Nightlight (Requires 2-Circuit Wiring)
- Touch Switch for Nightlight
- Step Dimming with touch switch
- Defogger

FEATURES

- Integral LED lighting (3,000K, 90CRI, 50,000 hour rated life)
- Powder Coated Frame Assembly
- 3/16" Glass with Polished Edge
- Fully Assembled, Installation Ready
- U.L. Listed for Damp Location
- Hardwired electrical connection
- Opalex fingerprint resistant coating on frosted panel



ARTEMIS SERIES MODEL #9560

This portrait-oriented mirror is designed with sleek, curved corners and a notch at the top for increased forward illumination of the user. With a minimal depth of 1.25", it's a slim and elegant addition to any room.

Item #	H	W	D	LED Wattage
9560-20x14	20"	14"	1.25"	22 Watts
9560-48x24	47.25"	23.625"	1.25"	44 Watts

** Custom Sizes Available, Consult Factory*

OPTIONS

- Adjustable color (range between 2700k and 4000k) with face mounted switch
- Dimmer for adjustable light levels with face mounted switch
- Hardwired electrical connection

FEATURES

- Integral LED lighting (3,000K, 90CRI, 50,000 hour rated life)
- Powder Coated Frame Assembly
- 3/16" Glass with Polished Edge
- Fully Assembled, Installation Ready
- U.L. Listed for Damp Location
- Grounded three-prong plug
- Opalex fingerprint resistant coating on frosted panel



HERMES

SERIES MODEL #9340

For bathroom, guestroom and corridor areas requiring the sophistication of a round mirror and the drama of light, this style is the perfect solution. The decorative leather strap emulates the simplicity of a suspended mirror.

Item #	H	W	D	LED Wattage
9340-30	35"	27.5625"	1.75"	120 Watts

** Custom Sizes Available, Consult Factory*

OPTIONS

- Step Dimming with touch switch
- Defogger

FEATURES

- Integral LED lighting (3,000K, 90CRI, 50,000 hour rated life)
- Powder Coated Frame Assembly
- 3/16" Glass with Polished Edge
- Fully Assembled, Installation Ready
- U.L. Listed for Damp Location
- Hardwired electrical connection
- Opalex fingerprint resistant coating on frosted panel



HESPERUS

SERIES MODEL #9258

Two 4" wide lighted panels border the vertical sides of this series.

Item #	H	W	D	LED Wattage
9258-36x36	36"	36"	2"	48 Watts
9258-36x48	36"	48"	2"	48 Watts
9258-36x60	36"	60"	2"	48 Watts

** Custom Sizes Available, Consult Factory*

OPTIONS

- Integral Nightlight (Requires 2-Circuit Wiring)
- Touch Switch for Nightlight
- Step Dimming with touch switch
- Defogger

FEATURES

- Integral LED lighting (3,000K, 90CRI, 50,000 hour rated life)
- Powder Coated Frame Assembly
- 3/16" Glass with Polished Edge
- Fully Assembled, Installation Ready
- U.L. Listed for Damp Location
- Hardwired electrical connection
- Opalex fingerprint resistant coating on frosted panel



DINLAS

SERIES MODEL #9245

This contemporary style features a wide metal frame inset with two vertical illuminated panels along with a soft blush of light reflected onto the surrounding walls.

Item #	H	W	D	LED Wattage
9245-36x28	36"	28"	2.25"	48 Watts
9245-36x36	36"	36"	2.25"	48 Watts

** Custom Sizes Available, Consult Factory*

OPTIONS

- Integral Nightlight (Requires 2-Circuit Wiring)
- Touch Switch for Nightlight
- Step Dimming with touch switch
- Defogger
- Consult factory for available metal finishes (Brushed Chrome Shown)

FEATURES

- Integral LED lighting (3,000K, 90CRI, 50,000 hour rated life)
- Powder Coated Frame Assembly
- 3/16" Glass with Polished Edge
- Fully Assembled, Installation Ready
- U.L. Listed for Damp Location
- Hardwired electrical connection
- Opalex fingerprint resistant coating on frosted panel



CRIOS

SERIES MODEL #9242

The two vertical illuminated panels are enhanced with the addition of a metal frame. The mirror frame may be ordered in a variety of metallic finishes to coordinate with other room hardware.

Item #	H	W	D	LED Wattage
9242-38x36	38"	36"	2.25"	48 Watts
9242-38x48	38"	48"	2.25"	48 Watts
9242-48x36	48"	36"	2.25"	60 Watts
9242-48x48	48"	48"	2.25"	60 Watts

** Custom Sizes Available, Consult Factory*

OPTIONS

- Integral Nightlight (Requires 2-Circuit Wiring)
- Touch Switch for Nightlight
- Step Dimming with touch switch
- Defogger
- Consult factory for available metal finishes (Brushed Chrome Shown)

FEATURES

- Integral LED lighting (3,000K, 90CRI, 50,000 hour rated life)
- Powder Coated Frame Assembly
- 3/16" Glass with Polished Edge
- Fully Assembled, Installation Ready
- U.L. Listed for Damp Location
- Hardwired electrical connection
- Opalex fingerprint resistant coating on frosted panel



BOREAS

SERIES MODEL #9240

The two lighting features in this style increase the illumination on the viewer as well as emitting a soft blush of radiance onto the walls on either side of the mirror.

Item #	H	W	D	LED Wattage
9240-38x30	38"	30"	2.125"	48 Watts
9240-38x36	38"	36"	2.125"	48 Watts
9240-38x48	38"	48"	2.125"	48 Watts
9240-48x36	48"	36"	2.125"	60 Watts
9240-48x48	48"	48"	2.125"	60 Watts

** Custom Sizes Available, Consult Factory*

OPTIONS

- Integral Nightlight (Requires 2-Circuit Wiring)
- Touch Switch for Nightlight
- Step Dimming with touch switch
- Defogger

FEATURES

- Integral LED lighting (3,000K, 90CRI, 50,000 hour rated life)
- Powder Coated Frame Assembly
- 3/16" Glass with Polished Edge
- Fully Assembled, Installation Ready
- U.L. Listed for Damp Location
- Hardwired electrical connection
- Opalex fingerprint resistant coating on frosted panel



IRIS SERIES MODEL #9260

Two wide lighted panels border the horizontal edges of this series adding both illumination and an interesting design element.

Item #	H	W	D	LED Wattage
9260-36x36	36"	36"	2"	48 Watts
9260-42x48	42"	48"	2"	64 Watts
9260-42x60	42"	60"	2"	80 Watts

** Custom Sizes Available, Consult Factory*

OPTIONS

- Integral Nightlight (Requires 2-Circuit Wiring)
- Touch Switch for Nightlight
- Step Dimming with touch switch
- Defogger

FEATURES

- Integral LED lighting (3,000K, 90CRI, 50,000 hour rated life)
- Powder Coated Frame Assembly
- 3/16" Glass with Polished Edge
- Fully Assembled, Installation Ready
- U.L. Listed for Damp Location
- Hardwired electrical connection
- Opalex fingerprint resistant coating on frosted panel



CERUS

SERIES MODEL #9241

This series sports a handsome 3" wide solid wood frame along with two wide vertical illuminated panels. The wood may be stained in a custom tone to accommodate the room's décor at no additional charge.

Item #	H	W	D	LED Wattage
9241-44x42	43.5"	41.5"	2.125"	48 Watts
9241-44x54	43.5"	53.5"	2.125"	48 Watts
9241-44x60	43.5"	59.5"	2.125"	48 Watts

** Custom Sizes Available, Consult Factory*

OPTIONS

- Integral Nightlight (Requires 2-Circuit Wiring)
- Touch Switch for Nightlight
- Step Dimming with touch switch
- Defogger
- Consult factory for available wood finishes (Ebonized Wood Shown)

FEATURES

- Integral LED lighting (3,000K, 90CRI, 50,000 hour rated life)
- Powder Coated Frame Assembly
- 3/16" Glass with Polished Edge
- Fully Assembled, Installation Ready
- U.L. Listed for Damp Location
- Hardwired electrical connection
- Opalex fingerprint resistant coating on frosted panel



EROS

SERIES MODEL #9254

This series combines the elegance of two illuminated panels with the ambient wall glow provided by additional light sources surrounding the perimeter.

Item #	H	W	D	LED Wattage
9254-38x36	38"	36"	2.125"	48 Watts
9254-38x48	38"	48"	2.125"	48 Watts
9254-38x54	38"	54"	2.125"	48 Watts
9254-48x40	48"	40"	2.125"	60 Watts
9254-48x54	48"	54"	2.125"	60 Watts

** Custom Sizes Available, Consult Factory*

OPTIONS

- Integral Nightlight (Requires 2-Circuit Wiring)
- Touch Switch for Nightlight
- Step Dimming with touch switch
- Defogger

FEATURES

- Integral LED lighting (3,000K, 90CRI, 50,000 hour rated life)
- Powder Coated Frame Assembly
- 3/16" Glass with Polished Edge
- Fully Assembled, Installation Ready
- U.L. Listed for Damp Location
- Hardwired electrical connection
- Opalex fingerprint resistant coating on frosted panel



HELIOS

SERIES MODEL #9256

The customary shape of this mirrored wall décor is enhanced with an illuminated internal oval of light that encircles the viewer in a radiant glow.

Item #	H	W	D	LED Wattage
9256-42x32	42"	32"	2.125"	66 Watts
9256-42x42	42"	42"	2.125"	66 Watts

** Custom Sizes Available, Consult Factory*

OPTIONS

- Integral Nightlight (Requires 2-Circuit Wiring)
- Touch Switch for Nightlight
- Step Dimming with touch switch
- Defogger

FEATURES

- Integral LED lighting (3,000K, 90CRI, 50,000 hour rated life)
- Powder Coated Frame Assembly
- 3/16" Glass with Polished Edge
- Fully Assembled, Installation Ready
- U.L. Listed for Damp Location
- Hardwired electrical connection
- Opalex fingerprint resistant coating on frosted panel



HERA

SERIES MODEL #9257

For larger scale applications, this double oval design provides separate halos of illumination at each station.

Item #	H	W	D	LED Wattage
9257-42x66	42"	66"	2.125"	132 Watts
9257-42x84	42"	84"	2.125"	132 Watts

** Custom Sizes Available, Consult Factory*

OPTIONS

- Integral Nightlight (Requires 2-Circuit Wiring)
- Touch Switch for Nightlight
- Step Dimming with touch switch
- Defogger

FEATURES

- Integral LED lighting (3,000K, 90CRI, 50,000 hour rated life)
- Powder Coated Frame Assembly
- 3/16" Glass with Polished Edge
- Fully Assembled, Installation Ready
- U.L. Listed for Damp Location
- Hardwired electrical connection
- Opalex fingerprint resistant coating on frosted panel



PLUTUS

SERIES MODEL #9338

Encircle the viewer in the ample illumination cast by the ring of light that borders this attractive mirror style, appropriate for public spaces and over vanities.

Item #	Diameter	D	LED Wattage
9338-24	24"	2.125"	44 Watts
9338-30	30"	2.125"	56 Watts

** Custom Sizes Available, Consult Factory*

OPTIONS

- Integral Nightlight (Requires 2-Circuit Wiring)
- Touch Switch for Nightlight
- Step Dimming with touch switch
- Defogger

FEATURES

- Integral LED lighting (3,000K, 90CRI, 50,000 hour rated life)
- Powder Coated Frame Assembly
- 3/16" Glass with Polished Edge
- Fully Assembled, Installation Ready
- U.L. Listed for Damp Location
- Hardwired electrical connection
- Opalex fingerprint resistant coating on frosted panel



POSEIDON

SERIES MODEL #9335

For bathroom, guestroom and corridor areas requiring the sophistication of a round mirror and the drama of light, this style is the perfect solution.

Item #	Diameter	D	LED Wattage
9335-24	24"	2.125"	44 Watts
9335-30	30"	2.125"	56 Watts

** Custom Sizes Available, Consult Factory*

OPTIONS

- Integral Nightlight (Requires 2-Circuit Wiring)
- Touch Switch for Nightlight
- Step Dimming with touch switch
- Defogger
- Consult factory for available metal finishes (Brushed Chrome Shown)

FEATURES

- Integral LED lighting (3,000K, 90CRI, 50,000 hour rated life)
- Powder Coated Frame Assembly
- 3/16" Glass with Polished Edge
- Fully Assembled, Installation Ready
- U.L. Listed for Damp Location
- Hardwired electrical connection
- Opalex fingerprint resistant coating on frosted panel

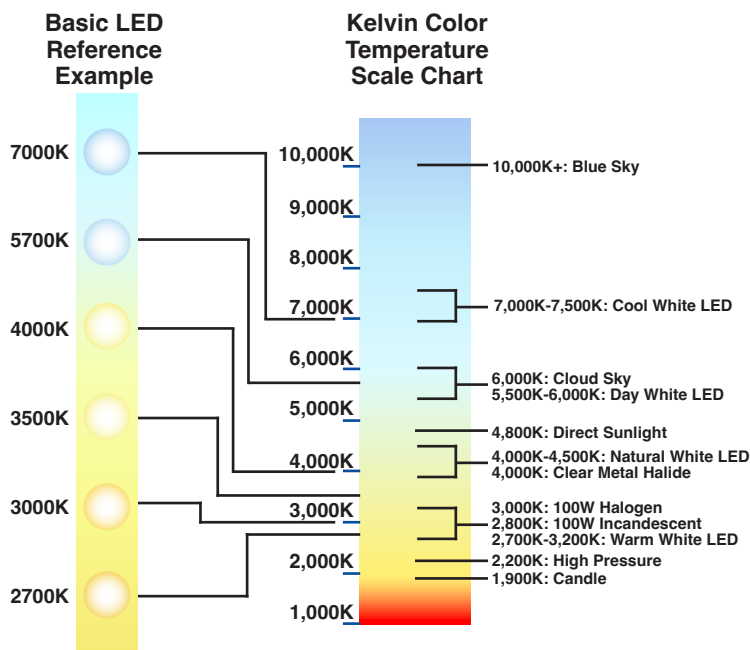
TECHNICAL INFORMATION

Our team at Scott Lamp Company has spent years developing an understanding for what works, what looks the best, and what is needed to engineer unique lighting solutions for any application. It's important to understand the range of LED lighting options and mirror selection that ultimately combine to create an optimum guest experience. These are just a few things to consider when looking for your illuminated mirrors.

COLOR TEMPERATURE

Color temperature, measured on a kelvin scale, is used to describe the appearance of light. Different light sources produce different colored light on a scale from 1000 Kelvin, to 10,000 Kelvin. Typically, commercial lighting falls on the scale between 2000 Kelvin and 6500 kelvin.

The most common temperature for lighting is 2700 Kelvin and can be used in common area, office areas, and living areas. This is a "soft white" color cast. As for rooms such as bathrooms & kitchens, you would typically want a "brighter white" so the temperature you choose would be 3000 Kelvin or higher.



COLOR-RENDERING INDEX (CRI)

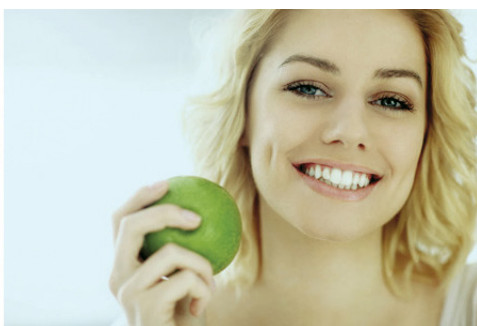
CRI indicates how accurately a light source reveals the true colors of objects, people, clothing, etc. when compared to how colors are shown in incandescent light or daylight. The closer a light's CRI is to 100 (the CRI of incandescent light or daylight), the better the color rendition of objects under that light. Lights with a CRI of 80 or higher are considered to show colors most accurately. The CRI of an LED light generally ranges from 70 to 98. All of our mirrors come wired with 90+ CRI LEDs for the most accurate visual color rendition available.



Excellent
90+ CRI
3000K



Good
80+ CRI
3000K



Reasonable
<70 CRI
3000K

HOW LONG DO LEDS LAST?

LEDs are notable for being extremely long-lasting products, but they can't last forever. The average lifespan of an LED is often rated up to 50,000 hours. This is about 50 times longer than a typical incandescent, 20-25 times longer than a typical halogen and 8-10 times longer than a typical CFL. If used 12 hours a day, an LED rated at 50,000 hours will last more than 11 years. Used 8 hours a day, it will last 17 years!

WHY DO LEDS FAIL?

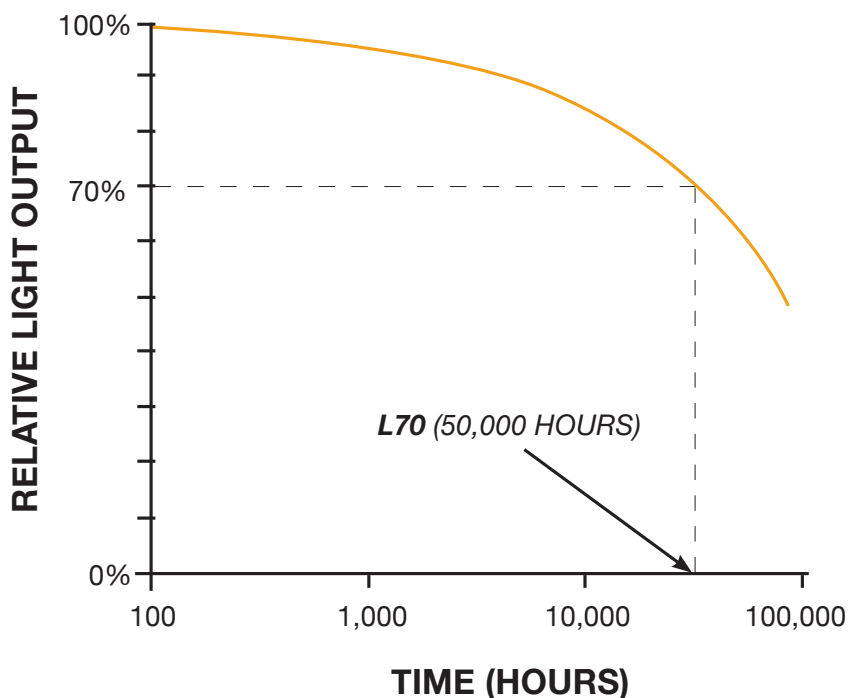
LEDs are long-life light sources which generally do not suddenly fail, but gradually lose their brightness and performance over time. In other words, LEDs fade and don't actually blow. The rate at which an LED loses brightness depends on the operating conditions and on external factors such as temperature, relative humidity and changes in the thermal load. In some poorly designed LED lights, bad heat sinking can result in overheating, which in turn could cause the LED to completely burn out or increase the rate of decline in brightness. The LED driver that provides the power supply can also be unreliable and cause premature failure, it is often the driver that fails and the LED remains operational.

HOW CAN LED LIFETIME BE PREDICTED?

In contrast to conventional light sources, an LED still emits light at the end of its life, just not enough. This figure is based on a LLMF (lamp lumen maintenance factor) of 70%. This is also referred to as L70. According to long-established industry standards, the lifetime of an LED is calculated as the exact period when its output arrives at 70% of the initial output.

WHY 70%?

As researched by the Alliance for Solid-State Illumination Systems and Technologies, this is the point when the reduction becomes visibly different to the human eye. An amount higher than this becomes much more difficult to noticeably see the difference in brightness.



OPTIONS



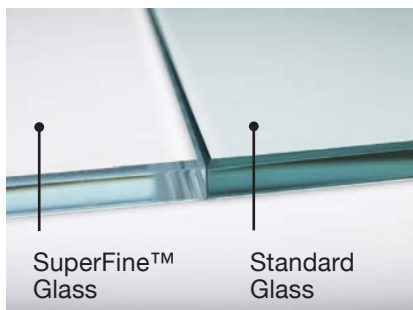
STEPPED DIMMING

Sometimes you just need a little bit of light. With stepped dimming, you can control the level of the light output at various levels, giving your guests the optimal level of lighting.



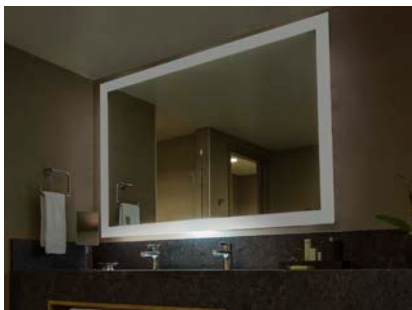
ILLUMINATION

Our standard mirrors make use of the latest integral LED technology. Our mirrors are supplied with 3000K color temperature and a 90+ CRI for the best results. Mirrors can be supplied with 2700K or T5 fluorescent lamps on request, consult the factory for the most current options available.



GLASS

Our standard glass is 3/16" thick with a pencil polished edge. In addition to our standard glass, we offer SuperFine™ Glass as an option. SuperFine™ Glass has lower iron content and reduces the slight green tint with superior white transparency. Please consult factory for specific requirements, beveling options, etc.



NIGHT LIGHT

This option is available on all of our mirrors. By using a secondary circuit the night light may be switched on and off independently from the mirror light.



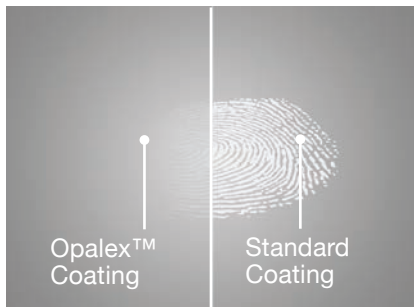
DIGITAL CLOCK

With an embedded digital clock, never lose track of the time while getting ready. This cutting edge feature allows you to view the time without disturbing the reflection.



MOUNTING AND ELECTRICAL

All mirrors come with a one-piece electrical assembly with a flexible whip connection. All metal components are galvanized steel with a full powder coated sealer for optimum corrosion resistance.



OPALEX™ COATING

Reduce the amount of cleaning with our Opalex™ Coating. Applied to the areas of illumination on the mirror, this oleophobic coating repels oils and grimy deposits, allowing for easier or even minimal cleaning.



FRAMES

Change the mirror's appearance with the frame. Numerous options of bevels, stains, finishes and styles for both wood and metal. Consult factory for more details.

DON'T SEE WHAT YOU NEED?

Don't see a style, shape or size that you envisioned for your project? Let us know and we'll create an innovative, custom model that fits your specific requirements. ***Remember, if you can imagine it, we can build it.***



INNOVATIVE REFLECTIONS
BY SCOTT LAMP CO.



FEATURED PROJECT (FRONT COVER)

Location: Hyatt Regency Lake Tahoe
Designer: CCS Architecture, San Francisco, CA
Item: Model # 9228

355 Watt Drive, Fairfield CA 94534 | (707) 864-2066
www.innreflections.com | www.scottlamp.com

© Copyright 2023 Scott Lamp Co, Inc. All Rights Reserved. Ref. # SLC072523-1
Product images are for illustration purposes only. Actual product colors and materials may vary.